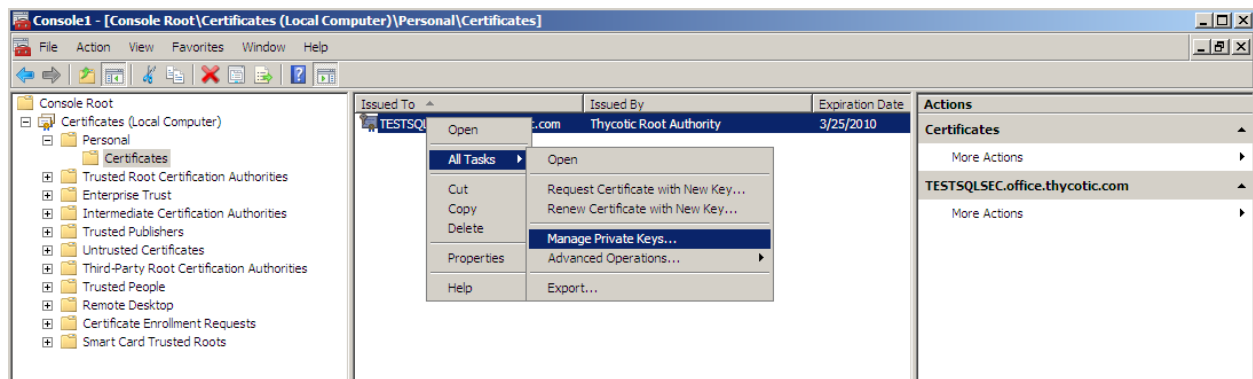


Database SSL Configuration

The following article covers the basic steps in configuring SSL for SQL Server 2008 Enterprise Edition:

<http://technet.microsoft.com/en-us/library/ms189067.aspx>

The certificate authority used for the SSL certificates must be trusted on all of the machines that are a part of Secret Server's installation. The SQL Server service account must be granted access to the certificate. This can be accomplished through the Certificates snap-in in Microsoft Management Console in the by selecting the certificate and then navigating as shown below:



Grant the user that SQL Server runs under read permissions.

Ensure that SSL is enabled for both the Primary database server and the Mirror server. It is not necessary to configure SSL on the Witness server.

Selecting the Enable SSL Encryption option on page 3 of the Installer as shown below will ensure that the application uses SSL encryption when it connects to the database.

3. Database Access

Can connect to a valid database with sufficient permissions?

Microsoft SQL Server (2005, 2008, Express)

⚠ You will have to create this database catalog manually.
This can be done in Microsoft Enterprise Manager or Microsoft Query Analyzer.

SQL Server (server name or IP) For example: localhost
(local)
MYDBSERVER
localhost\SQLEXPRESS

Database or Catalog

- Windows Authentication
- SQL Server Authentication

Advanced (not required)

Enable SSL Encryption [What is this?](#)

Failover Partner [What is this?](#)

(Requires SQL Server Configuration change)